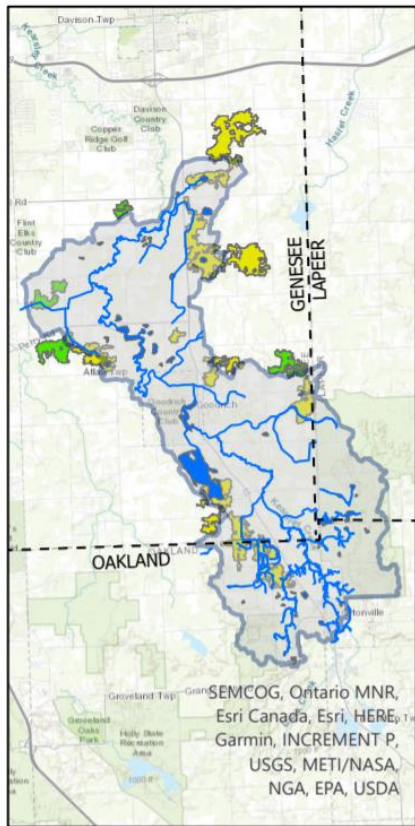


Map of Kearsley Creek Watershed



## Key Benefits

- Updates conservancy actions to match international goals
- Appeals to younger donors
- Assures long-term relevance
- Counters sprawl
- Preserves corridors

# Expanding Mission Resilience



## Project Goals

BHHC wants to improve its response to external and internal factors that affect its long-term resilience. Outdoor stewardship will adapt to climate change. Land acquisition will encompass a larger area and emphasize preserving corridors. Fundraising and outreach will explain the connection between land preservation and local, national, and planetary resilience. Making connections with local planning commissions and community organizations will be increasingly important. All conservancy actions showcase tangible progress.

## Project Phases

Phase	Description	Cost
1	Expand service area to match watersheds; create new maps	\$2,000
2	Update website with explanation of goals	\$90
3	Research and implement stewardship changes	\$200
4	Factor resilience into land acquisition decisions	\$200
5	Emphasize mission relevance in Fundraising	\$600
6	Increase Outreach to local planning commissions	\$640
<b>Total Project Cost</b>		<b>\$3,730</b>