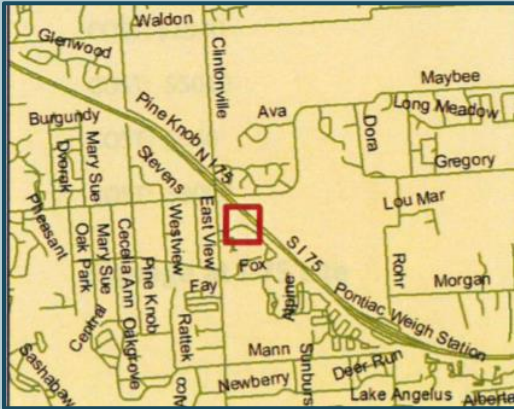


Program Area: Stewardship



Key Benefits

- Seen by 60,000 motorists each day
- Connects to Independence Twp safety path
- Trash to treasure story
- Outdoor recreation experience
- Promotion of planting native species
- Outdoor classroom for school children
- Birding site for prairie species



Restoring Voorheis-Beardsley



Project Goals

BHHC will transform a degraded site into a native prairie with walking path and birding observation overlook. The site can be viewed from I-75 by 60,000 motorists daily. A pollinator habitat with interpretive signage will enhance the visitor experience. We will develop educational programming with school children and adults, promoting native planting and ecosystem understanding.

Project Phases

Phase	Description	Cost
1	Remove trash, re-establish demo gardens	\$3,000
2	Establish roadside planting	\$6,000
3	Prairie restoration – controlled burn and seeding	\$8,500
4	Shrub planting (WAM grant awarded)	Completed
5	Prairie establishment care (3 years)	\$5,000 (awarded)
6	Design and installation of interpretive signage	Completed
7	Visible road signage – design and installation	\$5,010
8	Construction of birding overlook	\$8,000
	Total Project Cost	\$34,630
	Perpetual Stewardship Fund	\$5,000